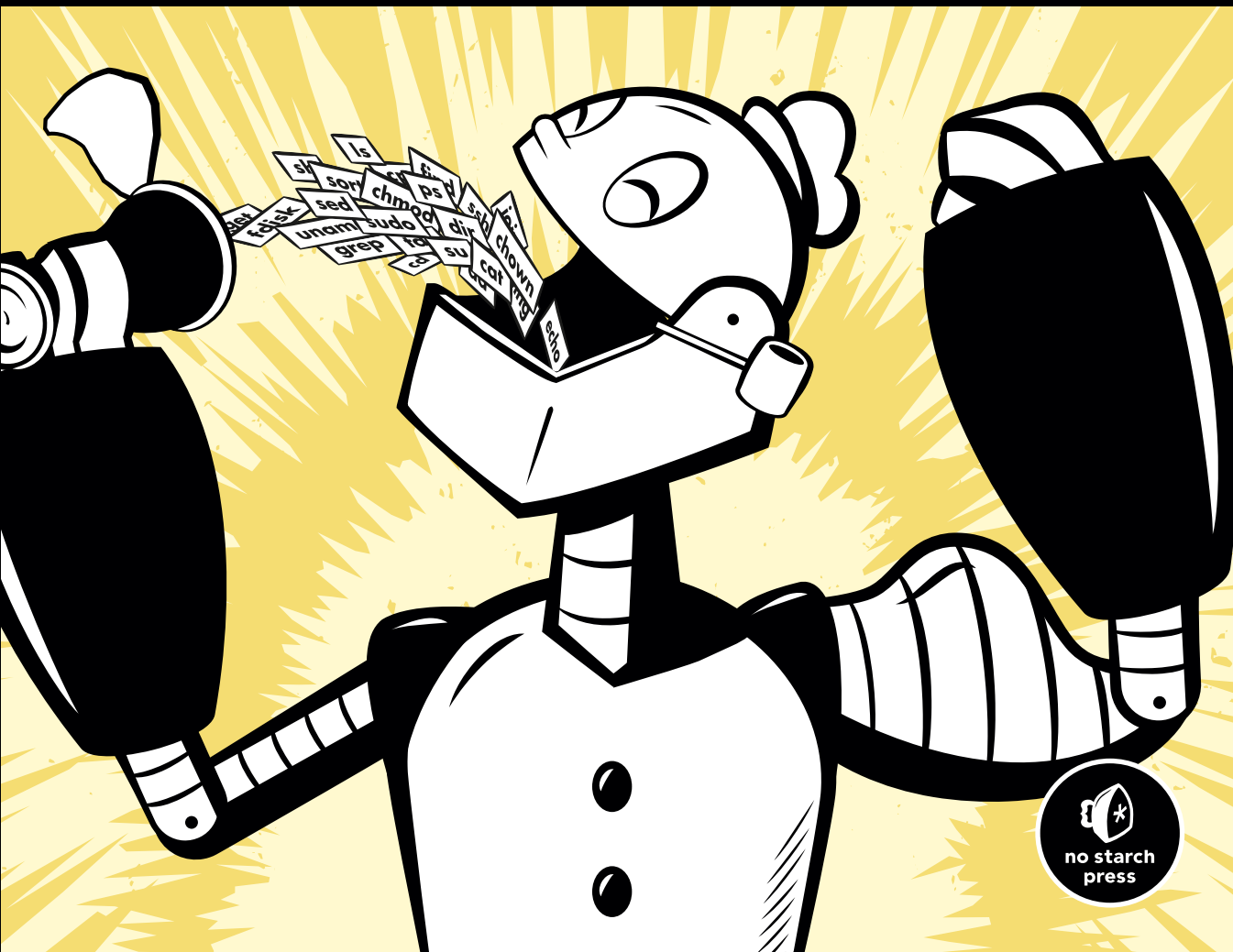


THE LINUX COMMAND LINE

A COMPLETE INTRODUCTION

WILLIAM E. SHOTTS, JR.



6

REDIRECTION

In this lesson we are going to unleash what may be the coolest feature of the command line: *I/O redirection*. The *I/O* stands for *input/output*, and with this facility you can redirect the input and output of commands to and from files, as well as connect multiple commands to make powerful command *pipelines*. To show off this facility, we will introduce the following commands:

- `cat`—Concatenate files.
- `sort`—Sort lines of text.
- `uniq`—Report or omit repeated lines.
- `wc`—Print newline, word, and byte counts for each file.
- `grep`—Print lines matching a pattern.
- `head`—Output the first part of a file.
- `tail`—Output the last part of a file.
- `tee`—Read from standard input and write to standard output and files.

Standard Input, Output, and Error

Many of the programs that we have used so far produce output of some kind. This output often consists of two types. First, we have the program's results; that is, the data the program is designed to produce. Second, we have status and error messages that tell us how the program is getting along. If we look at a command like `ls`, we can see that it displays its results and its error messages on the screen.

Keeping with the Unix theme of “everything is a file,” programs such as `ls` actually send their results to a special file called *standard output* (often expressed as *stdout*) and their status messages to another file called *standard error* (*stderr*). By default, both standard output and standard error are linked to the screen and not saved into a disk file.

In addition, many programs take input from a facility called *standard input* (*stdin*), which is, by default, attached to the keyboard.

I/O redirection allows us to change where output goes and where input comes from. Normally, output goes to the screen and input comes from the keyboard, but with I/O redirection we can change that.

Redirecting Standard Output

I/O redirection allows us to redefine where standard output goes. To redirect standard output to another file instead of the screen, we use the `>` redirection operator followed by the name of the file. Why would we want to do this? It's often useful to store the output of a command in a file. For example, we could tell the shell to send the output of the `ls` command to the file *ls-output.txt* instead of the screen:

```
[me@linuxbox ~]$ ls -l /usr/bin > ls-output.txt
```

Here, we created a long listing of the */usr/bin* directory and sent the results to the file *ls-output.txt*. Let's examine the redirected output of the command:

```
[me@linuxbox ~]$ ls -l ls-output.txt
-rw-rw-r-- 1 me  me  167878 2012-02-01 15:07 ls-output.txt
```

Good—a nice, large, text file. If we look at the file with `less`, we will see that the file *ls-output.txt* does indeed contain the results from our `ls` command:

```
[me@linuxbox ~]$ less ls-output.txt
```

Now, let's repeat our redirection test but this time with a twist. We'll change the name of the directory to one that does not exist:

```
[me@linuxbox ~]$ ls -l /bin/usr > ls-output.txt
ls: cannot access /bin/usr: No such file or directory
```

We received an error message. This makes sense because we specified the nonexistent directory `/bin/usr`, but why was the error message displayed on the screen rather than being redirected to the file `ls-output.txt`? The answer is that the `ls` program does not send its error messages to standard output. Instead, like most well-written Unix programs, it sends its error messages to standard error. Since we redirected only standard output and not standard error, the error message was still sent to the screen. We'll see how to redirect standard error in just a minute, but first, let's look at what happened to our output file:

```
[me@linuxbox ~]$ ls -l ls-output.txt
-rw-rw-r-- 1 me me 0 2012-02-01 15:08 ls-output.txt
```

The file now has zero length! This is because, when we redirect output with the `>` redirection operator, the destination file is always rewritten from the beginning. Since our `ls` command generated no results and only an error message, the redirection operation started to rewrite the file and then stopped because of the error, resulting in its truncation. In fact, if we ever need to actually truncate a file (or create a new, empty file) we can use a trick like this:

```
[me@linuxbox ~]$ > ls-output.txt
```

Simply using the redirection operator with no command preceding it will truncate an existing file or create a new, empty file.

So, how can we append redirected output to a file instead of overwriting the file from the beginning? For that, we use the `>>` redirection operator, like so:

```
[me@linuxbox ~]$ ls -l /usr/bin >> ls-output.txt
```

Using the `>>` operator will result in the output being appended to the file. If the file does not already exist, it is created just as though the `>` operator had been used. Let's put it to the test:

```
[me@linuxbox ~]$ ls -l /usr/bin >> ls-output.txt
[me@linuxbox ~]$ ls -l /usr/bin >> ls-output.txt
[me@linuxbox ~]$ ls -l /usr/bin >> ls-output.txt
[me@linuxbox ~]$ ls -l ls-output.txt
-rw-rw-r-- 1 me me 503634 2012-02-01 15:45 ls-output.txt
```

We repeated the command three times, resulting in an output file three times as large.

Redirecting Standard Error

Redirecting standard error lacks the ease of using a dedicated redirection operator. To redirect standard error we must refer to its *file descriptor*. A program can produce output on any of several numbered file streams. While

we have referred to the first three of these file streams as standard input, output, and error, the shell references them internally as file descriptors 0, 1, and 2, respectively. The shell provides a notation for redirecting files using the file descriptor number. Since standard error is the same as file descriptor 2, we can redirect standard error with this notation:

```
[me@linuxbox ~]$ ls -l /bin/usr 2> ls-error.txt
```

The file descriptor 2 is placed immediately before the redirection operator to perform the redirection of standard error to the file *ls-error.txt*.

Redirecting Standard Output and Standard Error to One File

There are cases in which we may wish to capture all of the output of a command to a single file. To do this, we must redirect both standard output and standard error at the same time. There are two ways to do this. First, here is the traditional way, which works with old versions of the shell:

```
[me@linuxbox ~]$ ls -l /bin/usr > ls-output.txt 2>&1
```

Using this method, we perform two redirections. First we redirect standard output to the file *ls-output.txt*, and then we redirect file descriptor 2 (standard error) to file descriptor 1 (standard output) using the notation `2>&1`.

Note: Notice that the order of the redirections is significant. The redirection of standard error must always occur after redirecting standard output or it doesn't work. In the example above, `> ls-output.txt 2>&1` redirects standard error to the file *ls-output.txt*, but if the order is changed to `2>&1 > ls-output.txt`, standard error is directed to the screen.

Recent versions of bash provide a second, more streamlined method for performing this combined redirection:

```
[me@linuxbox ~]$ ls -l /bin/usr &> ls-output.txt
```

In this example, we use the single notation `&>` to redirect both standard output and standard error to the file *ls-output.txt*.

Disposing of Unwanted Output

Sometimes silence really is golden, and we don't want output from a command—we just want to throw it away. This applies particularly to error and status messages. The system provides a way to do this by redirecting output to a special file called */dev/null*. This file is a system device called a *bit bucket*, which accepts input and does nothing with it. To suppress error messages from a command, we do this:

```
[me@linuxbox ~]$ ls -l /bin/usr 2> /dev/null
```

/DEV/NULL IN UNIX CULTURE

The bit bucket is an ancient Unix concept, and due to its universality it has appeared in many parts of Unix culture. So when someone says he is sending your comments to “dev null,” now you know what it means. For more examples, see the Wikipedia article at <http://en.wikipedia.org/wiki/Dev/null>.

Redirecting Standard Input

Up to now, we haven’t encountered any commands that make use of standard input (actually we have, but we’ll reveal that surprise a little bit later), so we need to introduce one.

cat—Concatenate Files

The `cat` command reads one or more files and copies them to standard output like so:

```
cat [file...]
```

In most cases, you can think of `cat` as being analogous to the `TYPE` command in DOS. You can use it to display files without paging. For example,

```
[me@linuxbox ~]$ cat ls-output.txt
```

will display the contents of the file `ls-output.txt`. `cat` is often used to display short text files. Since `cat` can accept more than one file as an argument, it can also be used to join files together. Say we have downloaded a large file that has been split into multiple parts (multimedia files are often split this way on Usenet), and we want to join them back together. If the files were named

```
movie.mpeg.001 movie.mpeg.002 ... movie.mpeg.099
```

we could rejoin them with this command:

```
[me@linuxbox ~]$ cat movie.mpeg.0* > movie.mpeg
```

Since wildcards always expand in sorted order, the arguments will be arranged in the correct order.

This is all well and good, but what does this have to do with standard input? Nothing yet, but let’s try something else. What happens if we enter `cat` with no arguments?

```
[me@linuxbox ~]$ cat
```

Nothing happens—it just sits there like it’s hung. It may seem that way, but it’s really doing exactly what it’s supposed to.

If `cat` is not given any arguments, it reads from standard input, and since standard input is, by default, attached to the keyboard, it’s waiting for us to type something!

Try this:

```
[me@linuxbox ~]$ cat
The quick brown fox jumped over the lazy dog.
```

Next, type CTRL-D (i.e., hold down the CTRL key and press D) to tell cat that it has reached *end-of-file (EOF)* on standard input:

```
[me@linuxbox ~]$ cat
The quick brown fox jumped over the lazy dog.
The quick brown fox jumped over the lazy dog.
```

In the absence of filename arguments, cat copies standard input to standard output, so we see our line of text repeated. We can use this behavior to create short text files. Let's say that we wanted to create a file called *lazy_dog.txt* containing the text in our example. We would do this:

```
[me@linuxbox ~]$ cat > lazy_dog.txt
The quick brown fox jumped over the lazy dog.
```

Enter the command followed by the text we want to place in the file. Remember to type CTRL-D at the end. Using the command line, we have implemented the world's dumbest word processor! To see our results, we can use cat to copy the file to standard output again:

```
[me@linuxbox ~]$ cat lazy_dog.txt
The quick brown fox jumped over the lazy dog.
```

Now that we know how cat accepts standard input in addition to filename arguments, let's try redirecting standard input:

```
[me@linuxbox ~]$ cat < lazy_dog.txt
The quick brown fox jumped over the lazy dog.
```

Using the < redirection operator, we change the source of standard input from the keyboard to the file *lazy_dog.txt*. We see that the result is the same as passing a single filename argument. This is not particularly useful compared to passing a filename argument, but it serves to demonstrate using a file as a source of standard input. Other commands make better use of standard input, as we shall soon see.

Before we move on, check out the man page for cat, as it has several interesting options.

Pipelines

The ability of commands to read data from standard input and send to standard output is utilized by a shell feature called *pipelines*. Using the pipe operator | (vertical bar), the standard output of one command can be *piped* into the standard input of another.

```
command1 | command2
```

To fully demonstrate this, we are going to need some commands. Remember how we said there was one we already knew that accepts standard input? It's `less`. We can use `less` to display, page by page, the output of any command that sends its results to standard output:

```
[me@linuxbox ~]$ ls -l /usr/bin | less
```

This is extremely handy! Using this technique, we can conveniently examine the output of any command that produces standard output.

Filters

Pipelines are often used to perform complex operations on data. It is possible to put several commands together into a pipeline. Frequently, the commands used this way are referred to as *filters*. Filters take input, change it somehow, and then output it. The first one we will try is `sort`. Imagine we want to make a combined list of all of the executable programs in `/bin` and `/usr/bin`, put them in sorted order, and then view the list:

```
[me@linuxbox ~]$ ls /bin /usr/bin | sort | less
```

Since we specified two directories (`/bin` and `/usr/bin`), the output of `ls` would have consisted of two sorted lists, one for each directory. By including `sort` in our pipeline, we changed the data to produce a single, sorted list.

uniq—Report or Omit Repeated Lines

The `uniq` command is often used in conjunction with `sort`. `uniq` accepts a sorted list of data from either standard input or a single filename argument (see the `uniq` man page for details) and, by default, removes any duplicates from the list. So, to make sure our list has no duplicates (that is, any programs of the same name that appear in both the `/bin` and `/usr/bin` directories) we will add `uniq` to our pipeline:

```
[me@linuxbox ~]$ ls /bin /usr/bin | sort | uniq | less
```

In this example, we use `uniq` to remove any duplicates from the output of the `sort` command. If we want to see the list of duplicates instead, we add the `-d` option to `uniq` like so:

```
[me@linuxbox ~]$ ls /bin /usr/bin | sort | uniq -d | less
```

wc—Print Line, Word, and Byte Counts

The `wc` (word count) command is used to display the number of lines, words, and bytes contained in files. For example:

```
[me@linuxbox ~]$ wc ls-output.txt
7902 64566 503634 ls-output.txt
```

In this case it prints out three numbers: lines, words, and bytes contained in *ls-output.txt*. Like our previous commands, if executed without command-line arguments, `wc` accepts standard input. The `-l` option limits its output to only report lines. Adding it to a pipeline is a handy way to count things. To see the number of items we have in our sorted list, we can do this:

```
[me@linuxbox ~]$ ls /bin /usr/bin | sort | uniq | wc -l
2728
```

grep—Print Lines Matching a Pattern

`grep` is a powerful program used to find text patterns within files, like this:

```
grep pattern [file...]
```

When `grep` encounters a “pattern” in the file, it prints out the lines containing it. The patterns that `grep` can match can be very complex, but for now we will concentrate on simple text matches. We’ll cover the advanced patterns, called *regular expressions*, in Chapter 19.

Let’s say we want to find all the files in our list of programs that have the word *zip* in the name. Such a search might give us an idea of which programs on our system have something to do with file compression. We would do this:

```
[me@linuxbox ~]$ ls /bin /usr/bin | sort | uniq | grep zip
bunzip2
bzip2
gunzip
gzip
unzip
zip
zipcloak
zipgrep
zipinfo
zipnote
zipsplit
```

There are a couple of handy options for `grep`: `-i`, which causes `grep` to ignore case when performing the search (normally searches are case sensitive) and `-v`, which tells `grep` to print only lines that do not match the pattern.

head/tail—Print First/Last Part of Files

Sometimes you don’t want all the output from a command. You may want only the first few lines or the last few lines. The `head` command prints the first 10 lines of a file, and the `tail` command prints the last 10 lines. By default, both commands print 10 lines of text, but this can be adjusted with the `-n` option:

```
[me@linuxbox ~]$ head -n 5 ls-output.txt
total 343496
-rwxr-xr-x 1 root root      31316 2011-12-05 08:58 [
```

```
-rwxr-xr-x 1 root root      8240 2011-12-09 13:39 411toppm
-rwxr-xr-x 1 root root    111276 2011-11-26 14:27 a2p
-rwxr-xr-x 1 root root    25368 2010-10-06 20:16 a52dec
[me@linuxbox ~]$ tail -n 5 ls-output.txt
-rwxr-xr-x 1 root root      5234 2011-06-27 10:56 znew
-rwxr-xr-x 1 root root      691 2009-09-10 04:21 zonetab2pot.py
-rw-r--r-- 1 root root      930 2011-11-01 12:23 zonetab2pot.pyc
-rw-r--r-- 1 root root      930 2011-11-01 12:23 zonetab2pot.pyo
lrwxrwxrwx 1 root root        6 2012-01-31 05:22 zsoelim -> soelim
```

These can be used in pipelines as well:

```
[me@linuxbox ~]$ ls /usr/bin | tail -n 5
znew
zonetab2pot.py
zonetab2pot.pyc
zonetab2pot.pyo
zsoelim
```

`tail` has an option that allows you to view files in real time. This is useful for watching the progress of log files as they are being written. In the following example, we will look at the `messages` file in `/var/log`. Superuser privileges are required to do this on some Linux distributions, because the `/var/log/messages` file may contain security information.

```
[me@linuxbox ~]$ tail -f /var/log/messages
Feb  8 13:40:05 twin4 dhclient: DHCPACK from 192.168.1.1
Feb  8 13:40:05 twin4 dhclient: bound to 192.168.1.4 -- renewal in 1652
seconds.
Feb  8 13:55:32 twin4 mountd[3953]: /var/NFSv4/musicbox exported to both
192.168.1.0/24 and twin7.localdomain in 192.168.1.0/24,twin7.localdomain
Feb  8 14:07:37 twin4 dhclient: DHCPREQUEST on eth0 to 192.168.1.1 port 67
Feb  8 14:07:37 twin4 dhclient: DHCPACK from 192.168.1.1
Feb  8 14:07:37 twin4 dhclient: bound to 192.168.1.4 -- renewal in 1771
seconds.
Feb  8 14:09:56 twin4 smartd[3468]: Device: /dev/hda, SMART Prefailure
Attribute: 8 Seek_Time_Performance changed from 237 to 236
Feb  8 14:10:37 twin4 mountd[3953]: /var/NFSv4/musicbox exported to both
192.168.1.0/24 and twin7.localdomain in 192.168.1.0/24,twin7.localdomain
Feb  8 14:25:07 twin4 sshd(pam_unix)[29234]: session opened for user me by
(uid=0)
Feb  8 14:25:36 twin4 su(pam_unix)[29279]: session opened for user root by
me(uid=500)
```

Using the `-f` option, `tail` continues to monitor the file and when new lines are appended, they immediately appear on the display. This continues until you type `CTRL-C`.

tee—Read from Stdin and Output to Stdout and Files

In keeping with our plumbing analogy, Linux provides a command called `tee` which creates a “T” fitting on our pipe. The `tee` program reads standard input and copies it to both standard output (allowing the data to continue down the pipeline) and to one or more files. This is useful for capturing a pipeline’s contents at an intermediate stage of processing. Here we repeat

one of our earlier examples, this time including `tee` to capture the entire directory listing to the file `ls.txt` before `grep` filters the pipeline's contents:

```
[me@linuxbox ~]$ ls /usr/bin | tee ls.txt | grep zip
bunzip2
bzip2
gunzip
gzip
unzip
zip
zipcloak
zipgrep
zipinfo
zipnote
zipsplit
```

Final Note

As always, check out the documentation of each of the commands we have covered in this chapter. We have seen only their most basic usage, and they all have a number of interesting options. As we gain Linux experience, we will see that the redirection feature of the command line is extremely useful for solving specialized problems. Many commands make use of standard input and output, and almost all command-line programs use standard error to display their informative messages.

LINUX IS ABOUT IMAGINATION

When I am asked to explain the difference between Windows and Linux, I often use a toy analogy.

Windows is like a Game Boy. You go to the store and buy one all shiny new in the box. You take it home, turn it on, and play with it. Pretty graphics, cute sounds. After a while, though, you get tired of the game that came with it, so you go back to the store and buy another one. This cycle repeats over and over. Finally, you go back to the store and say to the person behind the counter, "I want a game that does this!" only to be told that no such game exists because there is no "market demand" for it. Then you say, "But I only need to change this one thing!" The person behind the counter says you can't change it. The games are all sealed up in their cartridges. You discover that your toy is limited to the games that others have decided that you need and no more.

Linux, on the other hand, is like the world's largest Erector Set. You open it up, and it's just a huge collection of parts—a lot of steel struts, screws, nuts, gears, pulleys, and motors and a few suggestions on what to build. So you start to play with it. You build one of the suggestions and then another. After a while you discover that you have your own ideas of what to make. You don't ever have to go back to the store, because you already have everything you need. The Erector Set takes on the shape of your imagination. It does what you want.

Your choice of toys is, of course, a personal thing, so which toy would you find more satisfying?